

SUJOR

Sujor Battery Corporation Limited



Sujor Battery Corporation Limited

Address: 51st Dabao Road, 23rd Area, Bao'an District,
Shenzhen, Guangdong, China, 518101

Tel: 86-755-26095805

Fax: 86-755-86013044

Email: sales@sujorbattery.com

Website: www.sujorbattery.com



小巨人绿色科技
SUJOR Green Technology

引领无限动力
Leading infinite Power

BRIEF INTRODUCTION | 公司简介

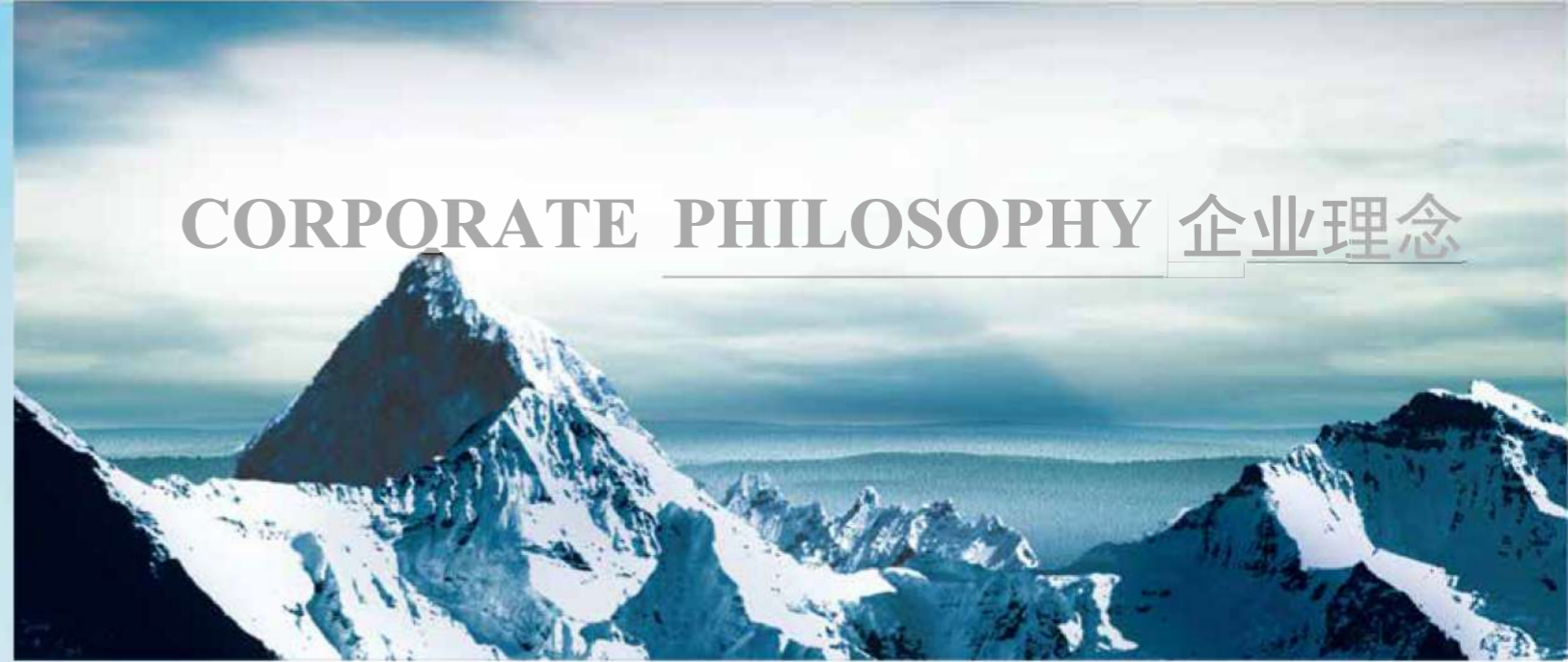
SUJOR Battery Corporation Limited with head quarter in Shenzhen city has been specialized in R&D, manufacturing and sale of Lithium batteries and NiMH rechargeable batteries. As a ISO9001:2008 approved enterprise, SUJOR now owns a first-class production base covering an area of 16,800 square meters with more than 400 skilled employee, including 25 professional technicians and 40 quality management personnel. With the implement of fully-auto and semi-auto machines, the daily production capacity for NiMH battery is up to 500,000pcs and for lithium battery, it has been more than 50,000Ah.

All products are CE/UL/ROHS/REACH approved. The brand name is SUJOR. The high rate lithium ion ICR18650 batteries produced by us are with high consistency and security, it is explosion-proof even under 200℃.

With unique advanced sealing technology, the rate for swell of lithium polymer battery decrease from a few ten thousand to ten million. NiMH batteries are highly welcomed due to its characteristic of long cycle life, environmentally friendly and easy to use. OEM orders are always welcomed.



CORPORATE PHILOSOPHY | 企业理念



Our mission to customers:

- Quality is life, assure best quality for our customers is our most important mission.
- Giving customers best cost performance solutions.
- Assure customers prompt delivery time.
- One-to-one professional pre-sale and after sale service.

Our mission to business partners:

Ensure interests of the partners and create a win-win situation.

Our mission to society:

- Contribute to social economic growth.
- Develop customer oriented talents and solve problem of employee.
- Create new green energy solution and make people's life better.



Factory equipment Figure (1)



Factory equipment Figure (2)

CORPORATE PHILOSOPHY | 企业理念

Our vision:

Being a leading and respected enterprise in the field of power solution.

Our core values:

Integrity, customers first, team working, result-oriented.

Our main products:

NiMH battery, NiCD battery, Li-polymer battery, Li-ion battery, Li-FePO4 battery, Li-MnO2 battery, Li-SOCI2 battery.

Leading global battery industry...

BUSINESS ENVIRONMENT | 企业环境

With the implement of fully-auto and semi-auto machines, the daily production capacity for NiMH battery is up to 500,000pcs and for lithium battery, it has been more than 50,000Ah.



Factory equipment Figure (3)



Factory equipment Figure (4)



Factory equipment Figure (5)



Factory equipment Figure (6)



QUALITY MANAGEMENT | 品质管理

QUALITY ASSURANCE:

SUJOR persists in "quality is our life, oriented to customer." It has imported ISO9001:2008 quality system management to ensure product quality to meet customer requirements. There are at least five steps quality control reflected in R&D process, incoming control process, production process, prior-shipment control and after-sales service process. The company has more than 40 strictly trained personnel and advanced detection equipment to ensure the company products quality in the leading position in battery industry.

OPERATING PROCEDURES | 操作流程

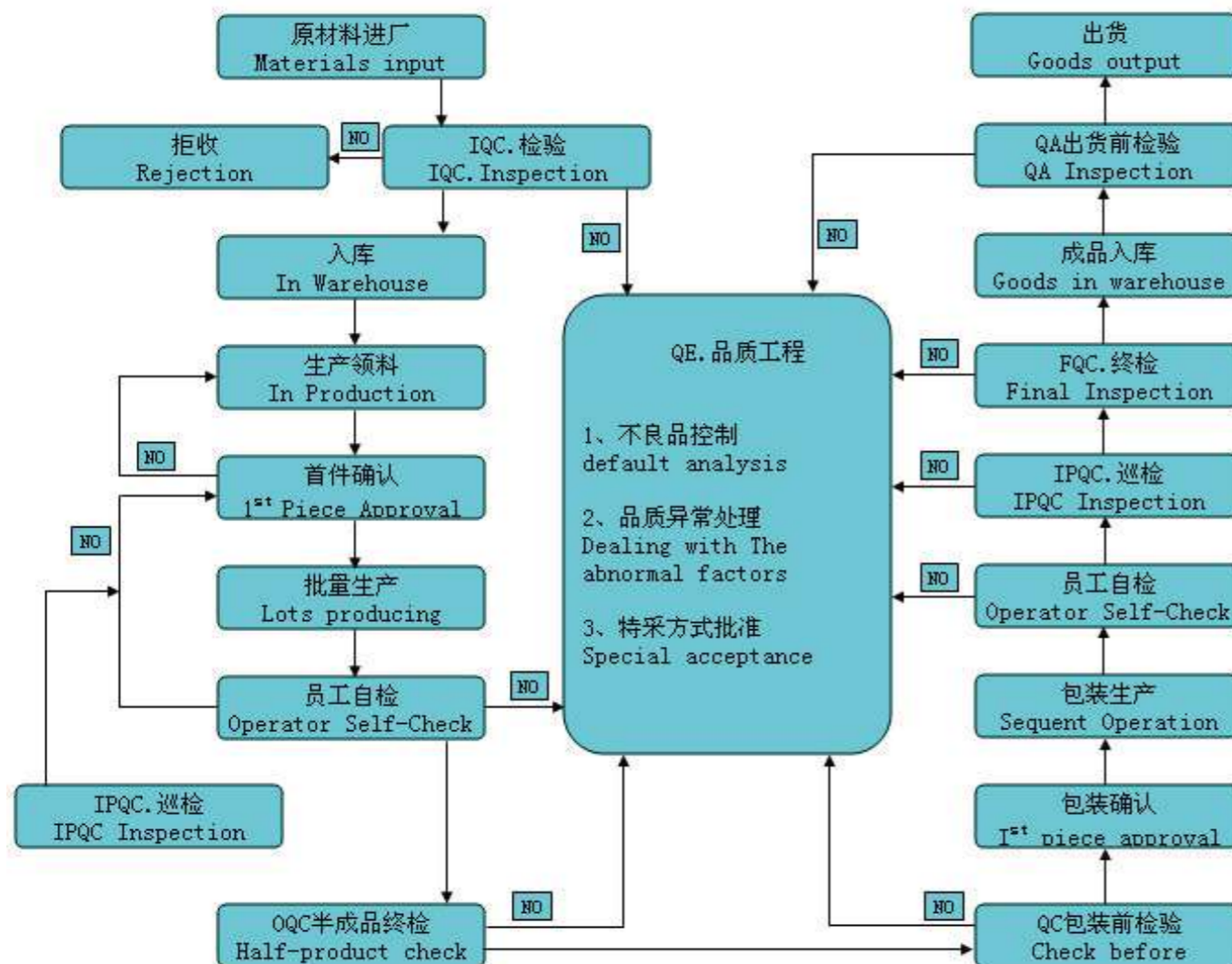


Quality control field (1)

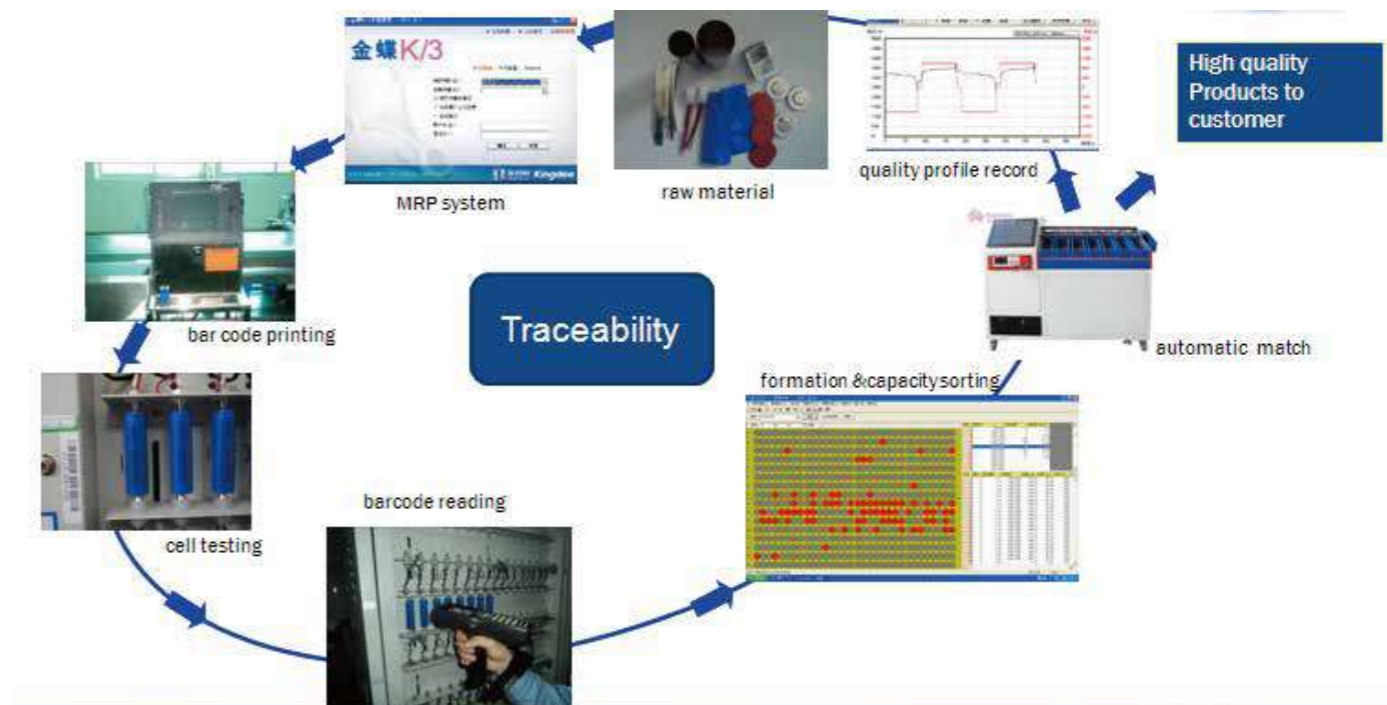


Quality control field (2)

Quality Control Flow Chart:



What we track:



We will keep record till end life of every cell. We can trace to raw material quality with this traceability system.

R&D CAPABILITIES

研发能力

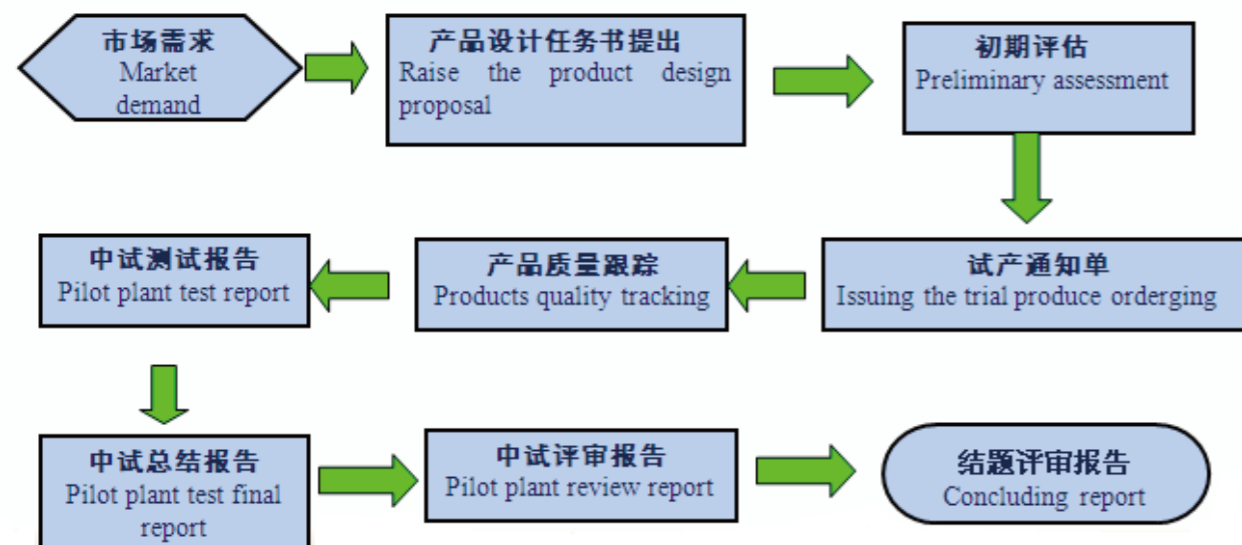
R&D CAPABILITIES:

SUJOR has built a strong research and development team including 10 Professors and 15 senior technical staff. The technical Director has more than 10 years of experience in lithium-ion battery development by using innovative technologies to keep us leading in the market. With the introduction of advanced precision testing instruments, the company invest a lot on research and development each year. The main topics include: high capacity, high rate charge&discharge, improvement for performance and service life of battery and so on. Especially we are successfully in solving the core technical problem for traditional high-rate discharge type battery: low consistency and safety. SUJOR's high rate lithium ion and NiMH rechargeable battery pack has high consistency and safety. They are widely used for power tools, R/C helicopter, motorcycles, electric bicycles ect.

Our main advantages:

1. Rich experience in the battery industry
2. Strong and professional R&D team
3. Advanced equipment in the laboratory for research

Research&development process flow sheet:



R&D EQUIPMENT:

研发设备

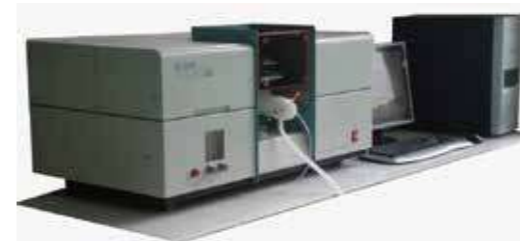
R&D equipment:



High temperature tester



Salty mist tester



Atomic Absorb Spectrum Apparatus



Automatic tester for internal resistance



Optical 3D Image Projector

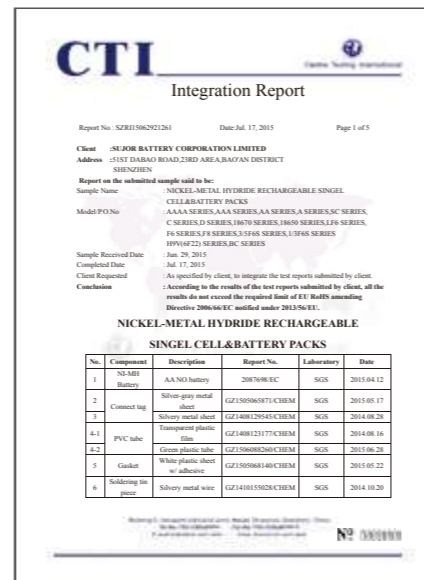


Life cycle Tester

CERTIFICATIONS

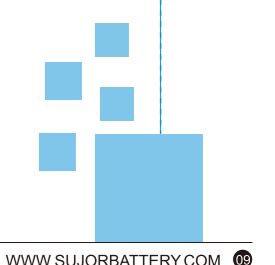
资质证书

资质证书 Certifications



CERTIFICATIONS

资质证书



PRODUCT CATEGORY

产品类别

锂聚合物电池
Lithium Polymer Battery



锂离子柱式电池
Lithium ion Battery



磷酸铁锂电池
Li-FePO4 Battery



镍氢电池
NiMH Battery



镍镉电池
NiCD Battery



锂亚硫酰氯电池
Li-SOCl2 Battery



锂锰电池
Li-MnO2 Battery



MAIN FEATURES

- High energy density
- Lighter & thinner
- Design flexible
- High discharge rate
- Extremely safe
- High voltage
- Low self-discharge
- No memory effect
- Long cycle life
- Environmentally-friendly

MAIN APPLICATIONS

- Digital cameras, portable DVD, MD, CD players
- Wireless & bluetooth devices
- Helicopter model
- Electric bicycles, GPS
- Power tools



Li-polymer Battery for communications

Model NO	Voltage (V)	Nominal Capacity (mAh)	Dimension			Approx Weight (g)
			T ±0.2 mm	W ±0.5 mm	L ±1.0 mm	
LP304360	3.7	660	3.0	43	60	12.8
LP303555	3.7	520	3.0	35	55	11.2
LP383434	3.7	400	3.0	34	34	8.0
LP383448	3.7	600	3.8	34	48	12.5
LP383450	3.7	650	3.8	34	50	12.8
LP383555	3.7	700	3.8	35	55	13.6
LP383562	3.7	800	3.8	35	62	16.0
LP384256	3.7	900	3.8	42	56	20.0
LP403040	3.7	450	4.0	30	40	9.0
LP403048	3.7	550	4.0	30	48	10.5
LP403436	3.7	450	4.0	34	36	9.0
LP423562	3.7	880	4.2	35	62	17.2
LP454360	3.7	1200	4.5	43	60	23.0
LP453048	3.7	600	4.5	30	48	14.0
LP503040	3.7	560	5.0	30	40	10.8
LP503048	3.7	720	5.0	30	48	14.0
LP503448	3.7	820	5.0	34	48	16.0
LP503450	3.7	850	5.0	34	50	16.8
LP503465	3.7	1150	5.0	34	65	25.0
LP503562	3.7	1050	5.0	35	62	20.5
LP552456	3.7	750	5.7	24	56	15.0
LP553055	3.7	1000	≤6.2	30	55	20.0
LP583048	3.7	800	≤5.8	30	48	17.0
LP602351	3.7	650	6.0	23	51	14.0
LP603048	3.7	850	≤6.0	30	48	18.0
LP603450	3.7	1000	6.0	34	50	21.0
LP603562	3.7	1300	≤6.2	35	62	26.0
LP623296	3.7	2000	6.2	32	96	40.0
LP624258	3.7	1650	6.2	42	58	31.0
LP633650	3.7	1200	≤6.5	36	50	22.0
LP653046	3.7	900	6.5	30	46	19.0
LP683885	3.7	2400	≤6.8	38	85	44.0
LP685060	3.7	2350	6.8	50	60	44.0
LP703048	3.7	1000	7.2	30	48	21.0
LP703255	3.7	1200	7.0	32	55	22.0
LP703562	3.7	1600	7.2	35	62	31.0

Remark:

1. It is commonly used for walkie-talkie, mobile phone and wireless local loop.
2. It has high capacity, long cycle life and high discharge platform.
3. Different sizes for tooling could be customized made.

Li-polymer Battery for DVD/PDA/MID/XPAD

Model NO	Voltage (V)	Nominal Capacity (mAh)	Dimension			Approx Weight (g)
			T ±0.2 mm	W ±0.5 mm	L ±1.0 mm	
LP4040104	3.7	1650	4.0	40	104	34.0
LP4045100	3.7	2000	≤4.2	45	100	40.0
LP4048135	3.7	3000	≤4.2	48	135	57.0
LP4528135	3.7	1800	≤4.5	28	135	36.0
LP454884	3.7	1800	≤4.8	48	84	36.0
LP464566	3.7	1500	4.6	45	66	29.0
LP455095	3.7	2000	4.5	50	95	40.0
LP4867102	3.7	3400	4.8	67	102	68.0
LP505468	3.7	1800	5.0	54	68	34.0
LP5023104	3.7	1200	5.0	23	104	24.0
LP505690	3.7	3100	5.0	56	90	56.0
LP504884	3.7	2100	≤5	48	84	41.0
LP5548135	3.7	4200	≤5.7	48	135	77.0
LP5528135	3.7	2200	≤5.8	28	135	43.0
LP555690	3.7	3200	5.5	56	90	57.0
LP554884	3.7	2500	≤5.7	48	84	46.0
LP555069	3.7	2000	≤5.7	50	69	40.0
LP6045100	3.7	3300	≤6.2	45	100	61.0
LP6067100	3.7	4100	6.0	67	100	58.0
LP605585	3.7	3200	6.0	55	85	60.0
LP6443128	3.7	4000	6.5	43	128	71.0
LP654884	3.7	3000	≤6.7	48	84	57.0
LP6834125	3.7	3000	6.8	34	125	57.0
LP704295	3.7	3400	7.0	42	95	61.0
LP7045100	3.7	3600	≤7.0	45	100	65.0
LP705585	3.7	4000	7.2	55	85	73.0
LP7543128	3.7	5000	7.5	43	128	95.0
LP854284	3.7	3200	8.5	42	84	57.0

Remark:

1. It is commonly used for DVD, PDA, MID, XPAD or other digital products.
2. It has high capacity, long cycle life and high discharge platform.
3. Different sizes for tooling could be customized made.

Li-polymer Battery for GPS

Model NO	Voltage (V)	Nominal Capacity (mAh)	Dimension			Approx Weight (g)
			T ±0.2 mm	W ±0.5 mm	L ±1.0 mm	
LP383434	3.7	400	3.0	34	34	8.0
LP304360	3.7	660	3.0	43	60	12.8
LP483756	3.7	1100	4.8	37	56	21.5
LP603443	3.7	850	6.0	34	43	18.0
LP653446	3.7	1000	6.5	34	46	21.0

Remark:

1. It is specially used for GPS.
2. It can be used in both high and low temperature environment.
3. Different sizes for tooling could be customized made.

Li-polymer Battery for portable medical equipment

Model NO	Voltage (V)	Nominal Capacity (mAh)	Dimension			Approx Weight (g)
			T ±0.2 mm	W ±0.5 mm	L ±1.0 mm	
LP302535	3.7	210	3.0	25	35	5.0
LP401430	3.7	120	4.0	14	30	4.8
LP656094	3.7	4000	6.5	60	94	73.0
LP6650105	3.7	4100	6.6	50	105	73.5

Remark:

1. It is commonly used for blood-pressure meters, heart pacemakers, electric wheelchair or other portable medical devices.
2. It has good consistency, stable working performance and high safety.
3. Different sizes for tooling could be customized made.

High drain Li-polymer Battery

Model NO	Voltage (V)	Nominal Capacity (mAh)	Dimension			Approx Weight (g)
			T ±0.2 mm	W ±0.5 mm	L ±1.0 mm	
LP383048	3.7	400	3.8	30	48	13
LP752535	3.7	450	7.5	25	35	12
LP533048	3.7	550	5.5	30	48.5	16
LP403362	3.7	620	4.0	33	62	17
LP683048	3.7	800	6.8	30	48	19
LP483562	3.7	850	4.8	35	62	21
LP723048	3.7	850	7.2	30	48.5	21
LP403090	3.7	1000	4.0	30	90	25
LP533562	3.7	1000	5.6	35	62	24
LP823048	3.7	1000	8.2	30	48.5	24
LP953048	3.7	1100	9.9	30	48	27
LP703562	3.7	1300	7.2	35	62	31
LP643480	3.7	1500	6.0	34	80	36
LP803562	3.7	1500	8.0	35	62	35
LP703480	3.7	1700	7.0	34	80	42

Remark:

1. It is commonly used for power tools, electric toys, UAV, aircraft gun and other high drain products.
2. It has very high discharge rate. The extended rate could be as high as 50C.
3. Different sizes for tooling could be customized made.



MAIN FEATURES

- High energy density.
- High voltage.
- Small volume.
- Long working time.
- No memory effect.
- Pollution-free.
- Low self-discharge.

MAIN APPLICATIONS

- Notebook computers.
- E-Cigarette.
- Miner lamps & Solar LED light.
- Camcorder.
- Torch & Flashlight.
- Light Electric Vehicle & Balanced twist car.
- Medical equipments.



CYLINDRICAL (COMMON TYPE)

Model NO	Voltage (V)	Nominal Capacity (mAh)	Dimension		Internal Impedance (mΩ)	Approx Weight (g)
			Diameter	Height		
10440C	3.7	340	10.0	43.7	≤100	12
14500C	3.7	800	13.9	49.7	≤80	20
14650C	3.7	1050	13.9	64.7	≤80	25.5
17335C	3.7	650	16.0	33.5	≤80	16
17500C	3.7	1100	17.0	49.7	≤80	29
18500C	3.7	1400	18.0	49.7	≤70	33
18650C	3.7	1800	18.0	64.7	≤60	40.5
18650C	3.7	2000	18.0	64.7	≤60	48
18650C	3.7	2200	18.0	64.7	≤60	49
18650C	3.7	2400	18.0	64.7	≤60	50
22650C	3.7	3000	22.0	65.2	≤55	65
26500C	3.7	3000	26.5	50.2	≤55	65
26650C	3.7	4500	26.5	65.5	≤55	85

C stands for 1~3C rate.

CYLINDRICAL(HIGH RATE)

Model NO	Voltage (V)	Nominal Capacity (mAh)	Dimension		Internal Impedance (mΩ)	Approx Weight (g)
			Diameter	Height		
13450MP	3.7	550	12.5	45.0	≤65	14.5
13650MP	3.7	800	12.5	65.0	≤65	16
18350MP	3.7	850	18.0	35.0	≤50	21.5
18650MP	3.7	2000	18.0	65.0	≤50	41
18650MP	3.7	2200	18.0	65.0	≤50	44
14280HP	3.7	280	13.9	28.0	≤55	10.5
14500HP	3.7	650	13.9	49.7	≤55	22
18500HP	3.7	1100	18.0	49.7	≤45	32
18650HP	3.7	1300	18.0	65.0	≤45	37
18650HP	3.7	1500	18.0	65.0	≤45	41
22650HP	3.7	2000	22.0	65.2	≤40	56
26650HP	3.7	3400	26.5	65.5	≤40	85

MP stands for 3~5C rate,HP stands for 10C rate
 Customized battery pack could be made according to customer's requirement.

BUTTON

Model NO	Voltage (V)	Nominal Capacity (mAh)	Dimension		Recommended continuous current	Approx Weight (g)
			Diameter	Height		
LIR1220	3.6	8	12.5	2.0	0.2CmA	0.8
LIR1620	3.6	15	16.0	2.0		1.2
LIR1632	3.6	25	16.0	3.2		1.7
LIR2016	3.6	15	20.0	1.6		1.7
LIR2025	3.6	30	20.0	2.5		2.3
LIR2032	3.6	40	20.0	3.2		2.8
LIR2430	3.6	55	24.5	3.0		3.8
LIR2450	3.6	110	24.5	5.0		5.3
LIR2477	3.6	185	24.5	7.7		7.5

MAIN FEATURES

- Small size and light weight.
- For all high power output application.
- Can be used under extreme temperature.
- Can be fully charged in short time.
- Free from overcharge concerns.
- Extremely safe,no explosion,no fire.
- No memory effect.
- Extra long cycle life(over 2000times).
- Environmentally-friendly.
- High discharge rate support.

MAIN APPLICATIONS

- Electric vehicle: electric bike, scooter,medical power chair,golf cart,ect.
- Solar/wind power station.
- Power back system.
- Power tool,electric farming and gardening machine.
- Lightings for mining.



Cylindrical Li-FePO4 High Capacity Type

Model NO	Voltage (V)	Nominal Capacity (mAh)	Dimension		Standard discharge current(mA)	Max discharge current(mA)	Cut-off charge voltage(V)	Cut-off discharge voltage(V)	Approx Weight (g)
			Diameter	Height					
IFR14430E	3.2	400	14.2	43.3	80	1200	3.65	2.0	13
IFR14500E	3.2	600	14.2	50.2	120	1800	3.65	2.0	18
IFR18500E	3.2	900	18.5	50.2	180	4500	3.65	2.0	30
IFR18650E	3.2	1400	18.5	65.2	280	4200	3.65	2.0	42
IFR18650E	3.2	1500	18.5	65.2	300	7500	3.65	2.0	42
IFR22650E	3.2	2000	22.5	65.2	600	10000	3.65	2.0	63
IFR26650E	3.2	3000	26.5	65.2	600	15000	3.65	2.0	85
IFR26650E	3.2	3200	26.5	65.2	640	16000	3.65	2.0	88

Li-FePO4 Battery Pack

Model NO	Voltage (V)	Nominal Capacity (Ah)	Dimension			Standard discharge current	Max discharge current	Cut-off charge voltage(V)	Cut-off discharge voltage(V)
			Width	Height	Thickness				
24V 10Ah	24	10	143.0	245.0	79.0	1.8A	27A	29.2	16.0
36V 10Ah	36	10	110.0	410.0	75.0	1.8A	27A	43.8	24.0
36V 12Ah	36	12	110.0	450.0	75.0	2.4A	36A	43.8	24.0
48V 10Ah	48	10	110.0	450.0	75.0	1.8A	27A	58.4	32.0
36V 10Ah	36	10	150.0	245.0	65.0	1.8A	27A	43.8	24.0
48V 10Ah	48	10	150.0	410.0	65.0	1.8A	27A	58.4	32.0

MAIN FEATURES

- Good cost performance.
- Cycle life as long as 1000 cycles.
- High energy density.
- Excellent discharge characteristics.
- Wide range of temperature.
- No memory effect.
- Pollution-free.
- Good safety performance.

MAIN APPLICATIONS

- Telecommunication products.
- Power tools
- Digital camera, toys.
- Cordless phones, vacuum products.
- Lightings.



NiMH Battery for communications

Size	Model NO	Voltage (V)	Nominal Capacity (mAh)	Dimension		Standard charge (mA)	Charge time(H)	Rapid charge (mA)	Charge time(H)	Approx Weight (g)
				Diameter (mm)	Height (mm)					
2/3AAA	2/3AAA300B	1.2	300	10.5	29	30	15	300	1.2	8.2
	2/3AAA350B	1.2	350	10.5	29	35	15	350	1.2	8.5
AAA	AAA500B	1.2	500	10.5	43	50	15	500	1.2	11
	AAA600B	1.2	600	10.5	43	60	15	600	1.2	12
	AAA700B	1.2	700	10.5	43	70	15	350	2.4	12.5
	AAA800B	1.2	800	10.5	43	80	15	400	2.4	13
AA	AA600B	1.2	600	14.5	49	60	15	600	1.2	19
	AA700B	1.2	700	14.5	49	70	15	700	1.2	20
	AA800B	1.2	800	14.5	49	80	15	800	1.2	21
	AA1000B	1.2	1000	14.5	49	100	15	1000	1.2	22
	AA1100B	1.2	1100	14.5	49	110	15	550	2.4	23
	AA1200B	1.2	1200	14.5	49	120	15	600	2.4	25
	AA1300B	1.2	1300	14.5	49	130	15	650	2.4	26
	AA1500B	1.2	1500	14.5	49	150	15	750	2.4	27
	AA1600B	1.2	1600	14.5	49	160	15	800	2.4	27
	AA1800B	1.2	1800	14.5	49	180	15	900	2.4	29
	AA1900B	1.2	1900	14.5	49	190	15	950	2.4	29.5
	AA2000B	1.2	2000	14.5	49	200	15	1000	2.4	30
	AA2100B	1.2	2100	14.5	49	210	15	1050	2.4	30
	AA2200B	1.2	2200	14.5	49	220	15	1100	2.4	31

Remark:

1. Letter "B" behind the battery model means flat top battery in the field of communications.
2. Battery capacity refer to the capacity obtained by single battery charge at 0.1C current and discharge at 0.2C at the ambient temperature of 25±2℃.
3. Strict protection control should be made in fast charge.



NiMH Battery for Vacuum cleaners

Size	Model NO	Voltage (V)	Nominal Capacity (mAh)	Dimension		Standard charge (mA)	Charge time(H)	Rapid charge (mA)	Charge time(H)	Approx Weight (g)
				Diameter (mm)	Height (mm)					
AA	AA1200LP	1.2	1200	14.5	49	120	15	600	2.4	25
	AA1500LP	1.2	1500	14.5	49	150	15	750	2.4	27
	AA1600LP	1.2	1600	14.5	49	160	15	800	2.4	27
SC	SC1300LP	1.2	1300	23	43	130	15	1300	1.2	43
	SC1500MP	1.2	1500	23	43	150	15	1500	1.2	44
	SC1600MP	1.2	1600	23	43	160	15	1600	1.2	45
	SC1700MP	1.2	1700	23	43	170	15	1700	1.2	47
	SC1800MP	1.2	1800	23	43	180	15	1800	1.2	48
	SC1900MP	1.2	1900	23	43	190	15	1900	1.2	49
	SC2000MP	1.2	2000	23	43	200	15	2000	1.2	50
	SC2500MP	1.2	2500	23	43	250	15	2500	1.2	55
	SC2800MP	1.2	2800	23	43	280	15	1400	2.4	58
	SC3000HP	1.2	3000	23	43	300	15	1500	2.4	60
	SC3300HP	1.2	3300	23	43	330	15	1650	2.4	62
	SC3500HP	1.2	3500	23	43	350	15	1750	2.4	64
	SC3600HP	1.2	3600	23	43	360	15	1800	2.4	65.5
	SC4000HP	1.2	4000	23	43	400	15	2000	2.4	65
SC4200HP	1.2	4200	23	43	420	15	2100	2.4	69	
SC4600HP	1.2	4600	23	43	460	15	2300	2.4	71	

Remark:

1. Letter "LP" means low discharge rate, "MP" means medium discharge rate, "HP" means high discharge rate.
2. Battery capacity refer to the capacity obtained by single battery charge at 0.1C current and discharge at 0.2C at the ambient temperature of 25±2℃.
3. Strict protection control should be made in fast charge.



NiMH Battery for lightings and lamps

Size	Model NO	Voltage (V)	Nominal Capacity (mAh)	Dimension		Standard charge (mA)	Charge time(H)	Rapid charge (mA)	Charge time(H)	Approx Weight (g)
				Diameter (mm)	Height (mm)					
AAA	AAA300A/B	1.2	300	10.5	44.5/43	30	15	300	1.2	9
	AAA400A/B	1.2	400	10.5	44.5/43	40	15	400	1.2	10
	AAA500A/BT	1.2	400	10.5	44.5/43	50	15	500	1.2	11.5
	AAA600A/BT	1.2	600	10.5	44.5/43	60	15	600	1.2	12
	AAA700A/BT	1.2	700	10.5	44.5/43	70	15	700	1.2	12.5
	AAA800A/B	1.2	800	10.5	44.5/43	80	15	800	1.2	13
AA	AA850A/B	1.2	850	10.5	44.5/43	85	15	850	1.2	13.5
	AA500A/B	1.2	500	14.5	50.5/49	50	15	500	1.2	17
	AA600A/B	1.2	600	14.5	50.5/49	60	15	600	1.2	19
	AA700A/B	1.2	700	14.5	50.5/49	70	15	700	1.2	20
	AA800A/B	1.2	800	14.5	50.5/49	80	15	800	1.2	21
	AA1000A/B	1.2	1000	14.5	50.5/49	100	15	1000	1.2	22
	AA1100A/B	1.2	1100	14.5	50.5/49	110	15	1100	1.2	23
	AA1200A/B	1.2	1200	14.5	50.5/49	120	15	600	2.4	25
	AA1300A/B	1.2	1300	14.5	50.5/49	130	15	650	2.4	26
	AA1500A/B	1.2	1500	14.5	50.5/49	150	15	750	2.4	27
	AA1600A/B	1.2	1600	14.5	50.5/49	160	15	800	2.4	27
	AA1700A/B	1.2	1800	14.5	50.5/49	180	15	900	2.4	29
	AA1800A/B	1.2	1900	14.5	50.5/49	190	15	950	2.4	29.5
	AA2000A/B	1.2	2000	14.5	50.5/49	200	15	1000	2.4	30
	AA800BT	1.2	800	14.5	49	80	15	400	2.4	21
AA1200BT	1.2	1200	14.5	49	120	15	600	2.4	25	
AA1600BT	1.2	1600	14.5	49	160	15	800	2.4	27	
AA1800BT	1.2	1800	14.5	49	180	15	900	2.4	29.5	
4/5SC	4/5SC2000	1.2	2000	23	31	200	15	1000	2.4	49
SC	SC1800	1.2	1800	23	43	180	15	900	2.4	48
	SC2000	1.2	2000	23	43	200	15	1000	2.4	50
	SC2500BT	1.2	2500	23	43	250	15	1250	2.4	55
	SC3000BT	1.2	3000	23	43	300	15	1500	2.4	60
1/2C	1/2C2000	1.2	2000	25.8	30	200	15	1000	2.4	49
	1/2C2500	1.2	2500	25.8	30	250	15	1250	2.4	58
C	C1800A/B	1.2	1800	25.8	51/50	180	15	900	2.4	50
	C2000A/B	1.2	2000	25.8	51/50	200	15	1000	2.4	55
	C2500A/B	1.2	2500	25.8	51/50	250	15	1250	2.4	60
	C3000A/B	1.2	3000	25.8	51/50	300	15	750	4	70
	C3500A/B	1.2	3500	25.8	51/50	350	15	875	4	73
	C5000	1.2	5000	25.8	51	500	15	1000	5.5	85
	C3600BT	1.2	3600	25.8	50	360	15	900	4.5	74
	C4000BT	1.2	4000	25.8	50	400	15	1000	4.5	80
1/2D	1/2D3500	1.2	3500	33	36	350	15	875	4.5	128
	1/2D4000	1.2	4000	33	36	400	15	1000	4.5	132
D	D4000A/B	1.2	4000	33	61.5/60.5	400	15	1000	4.5	135
	D5000A/B	1.2	7000	33	61.5/60.5	700	15	1000	5.5	145
	D6000A/B	1.2	8000	33	61.5/60.5	800	15	1000	6	155
	D7000A/B	1.2	7000	33	61.5/60.5	700	15	1500	5.5	145
	D8000A/B	1.2	8000	33	61.5/60.5	800	15	1600	5.5	155
	D9000A/B	1.2	9000	33	61.5/60.5	900	15	1600	6	160

Remark:

1. Letter "A" means high top,"B" means flat top,"T"means high temperature battery in the field of lamps.
2. Battery capacity refer to the capacity obtained by single battery charge at 0.1C current and discharge at 0.2C at the ambient temperature of 25±2 C .
3. Strict protection control should be made in fast charge.



NiMH Battery for power tools/airsoft gun

Size	Model NO	Voltage (V)	Nominal Capacity (mAh)	Dimension		Standard charge (mA)	Charge time(H)	Rapid charge (mA)	Charge time(H)	Approx Weight (g)
				Diameter (mm)	Height (mm)					
AA	AA800HP	1.2	800	14.5	50.5	80	15	800	1.2	21
	AA1000HP	1.2	1000	14.5	50.5	100	15	1000	1.2	22
	AA1200HP	1.2	1200	14.5	50.5	120	15	600	2.4	25
2/3A	2/3A900HP	1.2	900	17	29.2	90	15	450	2.4	15
	2/3A1000HP	1.2	1000	17	29.2	100	15	500	2.4	17
	2/3A1100HP	1.2	1100	17	29.2	110	15	550	2.4	19
	2/3A1200HP	1.2	1200	17	29.2	120	15	600	2.4	22
	2/3A1300HP	1.2	1300	17	29.2	130	15	650	2.4	24
SC	SC2000HP	1.2	2000	23	43	200	15	1000	2.4	50
	SC2200HP	1.2	2200	23	34	220	15	1100	2.4	51
	SC2500HP	1.2	2500	23	43	250	15	1250	2.4	58
	SC3000HP	1.2	3000	23	43	300	15	1500	2.4	60
	SC3300HP	1.2	3300	23	43	330	15	1650	2.4	62
	SC3500HP	1.2	3500	23	43	350	15	1750	2.4	64
	SC3800HP	1.2	3800	23	43	380	15	1900	2.4	65.5
	SC4000HP	1.2	4000	23	43	400	15	2000	2.4	69
	SC4200HP	1.2	4200	23	43	420	15	2100	2.4	70
	SC4600HP	1.2	4600	23	43	460	15	2300	2.4	71

Remark:

1. Letter "HP" means high rate power battery.
2. Battery capacity refer to the capacity obtained by single battery charge at 0.1C current and discharge at 0.2C at the ambient temperature of 25±2 C .
3. Strict protection control should be made in fast charge.



NiMH Battery for personal care products

Size	Model NO	Voltage (V)	Nominal Capacity (mAh)	Dimension		Standard charge (mA)	Charge time(H)	Rapid charge (mA)	Charge time(H)	Approx Weight (g)
				Diameter (mm)	Height (mm)					
2/3AA	2/3AA500BR	1.2	500	14.5	29	50	15	500	1.2	16
	2/3AA600BR	1.2	600	14.5	29	60	15	600	1.2	18
	2/3AA700BR	1.2	700	14.5	29	70	15	700	1.2	19
AAA	AAA500BR	1.2	500	10.5	43	50	15	500	1.2	11
	AAA600BR	1.2	600	10.5	43	60	15	600	1.2	12
	AAA700BR	1.2	700	10.5	43	70	15	700	1.2	12.5
	AAA800BR	1.2	800	10.5	43	80	15	800	1.2	13
AA	AA600BR	1.2	600	14.5	49	60	15	600	1.2	19
	AA700BR	1.2	700	14.5	49	70	15	700	1.2	20
	AA800BR	1.2	800	14.5	49	80	15	800	1.2	21
	AA1000BR	1.2	1000	14.5	49	100	15	1000	1.2	22
	AA1100BR	1.2	1100	14.5	49	110	15	550	2.4	23
	AA1200BR	1.2	1200	14.5	49	120	15	600	2.4	25
	AA1300BR	1.2	1300	14.5	49	130	15	650	2.4	26
	AA1500BR	1.2	1500	14.5	49	150	15	750	2.4	27
	AA1600BR	1.2	1600	14.5	49	160	15	800	2.4	27
	AA1800BR	1.2	1800	14.5	49	180	15	900	2.4	29

Remark:

1. Letter "R" means ready to use low self-discharge battery for personal care products.
2. Battery capacity refer to the capacity obtained by single battery charge at 0.1C current and discharged at 0.2C at the ambient temperature of 25±2 C.
3. Capacity retention is more than 80% after 1year.
- 4.The battery has good recovery performance after storage.



PRISMATIC TYPE

Model NO	Voltage (V)	Nominal Capacity (mAh)	Dimension	Standard charge (mA)	Charge time(H)	Rapid charge (mA)	Charge time(H)	Approx Weight (g)
			T*W*L (mm)					
9V 160	9	160	17.5*26.5*48.5	16	15	30	7	33
9V 200	9	200	17.5*26.5*48.5	20	15	40	7	42
9V 220	9	220	17.5*26.5*48.5	22	15	44	7	42
9V 250	9	250	17.5*26.5*48.5	25	15	50	7	45

MAIN FEATURES

- Good cost performance.
- Cycle life as long as 500 cycles.
- High discharge rate.
- Excellent over-discharge and over-charge characteristics.
- Wide range of temperature.
- Good safety performance.

MAIN APPLICATIONS

- Telecommunication products.
- Power tools.
- Toys.
- Cordless phones, vacuum products.
- Lightings.



Cylindrical NiCD Battery

Type	Model	Nominal Voltage (V)	Capacity (mAh)	Dimension (max)		Standard Charge		Rapid Charge		Approx Weight (g)	
				Diameter (mm)	Height (mm)	Current (mA)	Time (H)	Current (mA)	Time (H)		
AAA	AAA300A/B	1.2	300	10.5	44.5/43	30	16	300	1.5	11	
	AAA400A	1.2	400	10.5	44.5	40	16	400	1.5	14	
AA	2/3AA300	1.2	300	14.5	29	30	16	300	1.5	11	
	2/3AA400	1.2	400	14.5	29	40	16	400	1.5	12	
	4/5AA700	1.2	700	14.5	43.3	70	16	700	1.5	20	
	AA500	1.2	500	14.5	50.5	50	16	500	1.5	18	
	AA600A/B	1.2	600	14.5	50.5/49.5	60	16	600	1.5	19	
	AA700A/B	1.2	700	14.5	50.5/49.5	70	16	700	1.5	20	
	AA800	1.2	800	14.5	50.5	80	16	800	1.5	21	
	AA900	1.2	900	14.5	50.5	90	16	900	1.5	23	
	AA1000	1.2	1000	14.5	50.5	100	16	500	2.5	24	
	4/3AA1100	1.2	1100	14.5	65.5	110	16	550	2.5	30	
	A	1/3A240	1.2	240	17	17	24	16	240	1.5	10
		2/3A600	1.2	600	17	29	120	16	600	1.5	25
4/5A1200		1.2	1200	17	40	120	16	600	2.5	28	
A1400		1.2	1400	17	50	140	16	700	2.5	32	
4/3A1600		1.2	1600	17	66.5	160	16	800	2.5	41	
SC	2/3SC600	1.2	600	23	26.5	60	16	600	1.5	25	
	4/5SC1000	1.2	1000	23	34	100	16	1000	1.5	37	
	SC1300	1.2	1300	23	43	130	16	650	2.5	40	
	SC1500	1.2	1500	23	43	150	16	750	2.5	45	
	SC1800	1.2	1800	23	43	180	16	900	2.5	49	
	SC2000	1.2	2000	23	43	200	16	1000	2.5	50	
C	C2000	1.2	2000	25.8	50	200	16	1000	2.5	65	
	C2500	1.2	2500	25.8	50	250	16	2250	2.5	70	
	C3000	1.2	3000	25.8	50	300	16	1500	2.5	75	
D	D4000	1.2	4000	33	60.5	400	16	2000	2.5	135	
	D4500	1.2	4500	33	60.5	450	16	2250	2.5	140	
	D5000	1.2	5000	33	60.5	500	16	2500	2.5	145	
F	F9000	1.2	9000	33	90.5	900	16	2250	5	210	
	9V100	9	100	17.5(T)*26.5(W)*48.5(H)		10	16	20	5.5	42	
	9V120	9	120	17.5(T)*26.5(W)*48.5(H)		12	16	20	6.5	42	

Button NiCD Battery

Model NO.	Nominal Voltage (V)	Capacity (mAh)	Dimension (max)		Standard Charge		Trickle Charge	Approx. Weight (g)
			Diameter (mm)	Height (mm)	Current (mA)	Time (H)	Current (mA)	
B60K	1.2	60	15.3	6.1	6	14	2.0	3.2
B100K	1.2	100	15.3	7.7	10	14	3.0	4.0
B120K	1.2	120	23.4*15.1	5.2	12	14	4.0	5.3
B170K	1.2	170	25.0	7.3	17	14	5.0	8.6
B280K	1.2	280	25.0	8.4	28	14	8.0	12.0
B9V120	9	120	26*17	49.0	12	14	4.0	35.0



MAIN FEATURES

- Superior shelf life: It is proved to be more than 10years at room temperature.
- High energy type is bobbin structure and fit for low discharge rate applications.
- High power type is spiral structure and fit for high current discharge rate applications.
- High energy density.
- Wide working temperature ranging from -60℃ to 85℃.
- Pollution-free.
- Good safety performance.
- High reliability: The annual self-discharge rate is less than 1%.

MAIN APPLICATIONS

- CMOS circuit boards, AMR of common instruments, medical equipment.
- Marine electronic, air-sea-land weapon, GPS transceiver, ground sensor, artillery fuse.
- Aerospace applications.
- Various meter: water meter, electricity meter, IC card gas meter.
- Safety devices: alarms, portable sensor monitoring device.
- Burglar alarm, tire monitoring system, electronic memory device.



HIGH ENERGY TYPE

Model NO	Size	Voltage (V)	Nominal Capacity (mAh)	Dimension	Standard discharge (mA)	Max.Continuous discharge (mA)	Operation temperature (°C)	Approx Weight (g)
				D*H (mm)				
ER10450	AAA	3.6	800	10.0*45.0	0.5	10	-60℃~+85℃	9
ER14250	1/2AA	3.6	1200	14.5*25.0	0.5	50	-60℃~+85℃	10
ER14335	2/3AA	3.6	1650	14.5*33.5	0.5	75	-60℃~+85℃	13
ER14505	AA	3.6	2700	14.5*50.5	2.0	100	-60℃~+85℃	19
ER17335	2/3A	3.6	2200	17*33.5	2.0	100	-60℃~+85℃	30
ER17505	A	3.6	3500	17*50.5	2.0	100	-60℃~+85℃	32
ER18505	A	3.6	4000	18.5*50.5	2.0	120	-60℃~+85℃	32
ER26500	C	3.6	9000	26.2*50.5	2.0	200	-60℃~+85℃	55
ER34615	D	3.6	19000	34.2*61.5	2.0	230	-60℃~+85℃	107
ER9V	9V	10.8	1200	48.8*17.8*7.5	0.5	35	-60℃~+85℃	16

HIGH POWER TYPE

Model NO	Size	Voltage (V)	Nominal Capacity (mAh)	Dimension		Standard discharge (mA)	Max.Continuous discharge (mA)	Operation temperature (°C)	Approx Weight (g)
				D*H (mm)					
ER14250M	1/2AA	3.6	800	14.5×25.0		0.5	200	-60°C~+85°C	11
ER14335M	2/3AA	3.6	1300	14.5×33.5		0.7	200	-60°C~+85°C	14
ER14505M	AA	3.6	2200	14.5×50.5		1.0	500	-60°C~+85°C	21
ER17335M	2/3A	3.6	1900	17×33.5		1.0	500	-60°C~+85°C	20
ER17505M	A	3.6	2700	17×50.5		1.0	1000	-60°C~+85°C	29
ER18505M	A	3.6	3500	18.5×50.5		1.0	1000	-60°C~+85°C	33
ER26500M	C	3.6	6500	26.2×50.5		10.0	1500	-60°C~+85°C	57
ER34615M	D	3.6	14500	34.2×61.5		10.0	2000	-60°C~+85°C	110



HIGH TEMPERATURE TYPE

Model NO	Size	Voltage (V)	Nominal Capacity (mAh)	Dimension		Standard discharge (mA)	Max.discharge current (mA)	Operation temperature (°C)	Approx Weight (g)
				D*H (mm)					
ER14250S	1/2AA	3.6	680	14.5×25.0		0.5	50	-40~+150	11
ER14505S	AA	3.6	1800	14.5×50.5		0.5	100	-40~+150	20
ER26500S	C	3.6	5000	26.2×50.5		0.5	150	-40~+150	55
ER34615S	D	3.6	13000	34.2×61.5		0.5	100	-40~+150	105
ER341245S	DD	3.6	25000	35.2*125		0.5	300	-40~+150	220

MAIN FEATURES

- High energy density.
- High voltage: 3.0V per cell.
- High power type is spiral structure and fit for high discharge rate product.
- High capacity type is bobbin structure and fit for low discharge rate product.
- Excellent discharge characteristics.
- Wide range of temperature normally from -20°C to 60°C.
- Good leakage resistance.

MAIN APPLICATIONS

- Electronic locks.
- Water, electricity and gas meters.
- Lightings.
- Medical products.
- C-MOS and S-RAM, memory backup power application.
- Watch, remote control, toys.



HIGH POWER TYPE

Model NO	Size	Voltage(V)	Nominal Capacity(mAh)	Size (mm)		Max. discharge current(mA)		Weight(g)
				Diameter	Height	Continuous	Pulse	
CR14250	1/2AA	3.0	600	14.5	25.0	500	1000	10
CR14335	2/3AA	3.0	800	14.5	33.5	1000	2000	14
CR14505	AA	3.0	1400	14.5	50.5	1000	2000	21
CR15270	CR2	3.0	850	15.5	27.0	850	1500	13
CR17335	123A	3.0	1400	17.0	34.5	1000	3000	20
CR17450		3.0	2000	17.0	45.0	1500	3000	26
CR17505	A	3.0	2300	17.0	50.5	1500	3000	30
CR-P2		3.0	1400	35.8*19.5*34.0		1500	3000	42
2CR5		3.0	1400	34.0*17.0*45.0		1500	3000	43
CR18505		3.0	2500	18.5	50.5	1500	3000	35
CR26500	C	3.0	5400	26	50.5	2000	3000	62
CR34615	D	3.0	12000	34	61.5	2000	3000	125

HIGH CAPACITY TYPE

Model NO	Size	Voltage(V)	Nominal Capacity(mAh)	Size (mm)		Max. discharge current(mA)		Weight(g)
				Diameter	Height	Continuous	Pulse	
CR14250SE	1/2AA	3.0	900	14.5	25.0	7	70	11
CR14335SE	2/3AA	3.0	1100	14.5	33.5	8	80	16
CR14505SE	AA	3.0	1800	14.5	50.5	10	100	22
CR17335SE	2/3A	3.0	1800	17.0	33.5	10	100	22
CR17450SE		3.0	2400	17.0	45.0	15	150	28